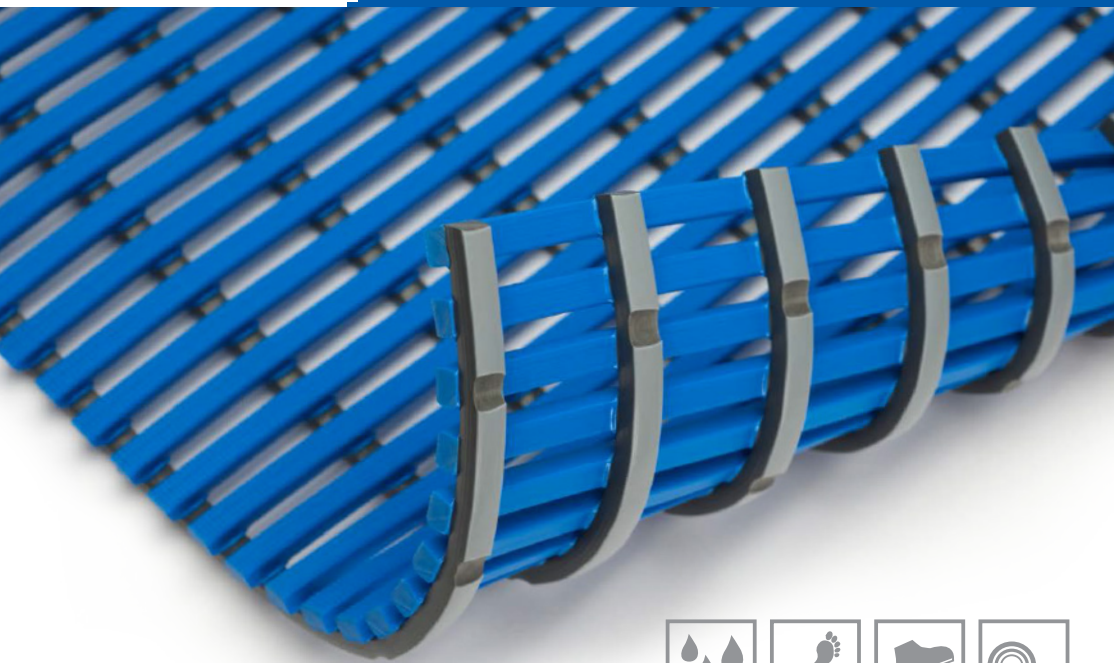


EHA – WET ROOM MATS

ANTI-SKID BACK PROFILES KEEP THE MAT SAFELY ON THE FLOOR



PROPERTIES

EHA – Wet room mats are hygienic, slip resistant, and fungicidal.

AREAS OF USE

Swimming pools and therapeutic baths, changing and locker rooms, saunas, health resort facilities, hospitals etc.

COLORS

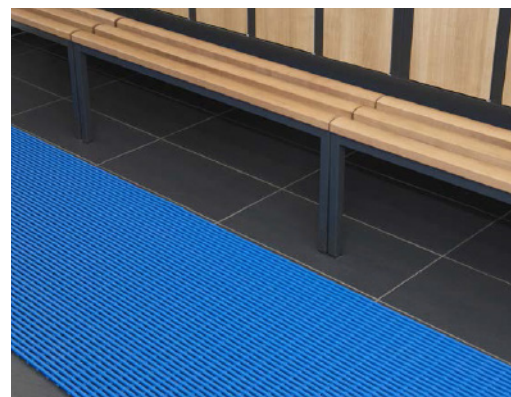


red white blue green yellow



brown ivory mint green grey black

EHA – WET ROOM MATS



EHA – Wet room mats are treated so as to be fungicidal and bactericidal and therefore do not allow bacteria and fungi to develop.

The mats allow water to drain on all sides and additionally are provided with a special anti-skid back profile which warrants optimum floor contact.

TECHNICAL DATA

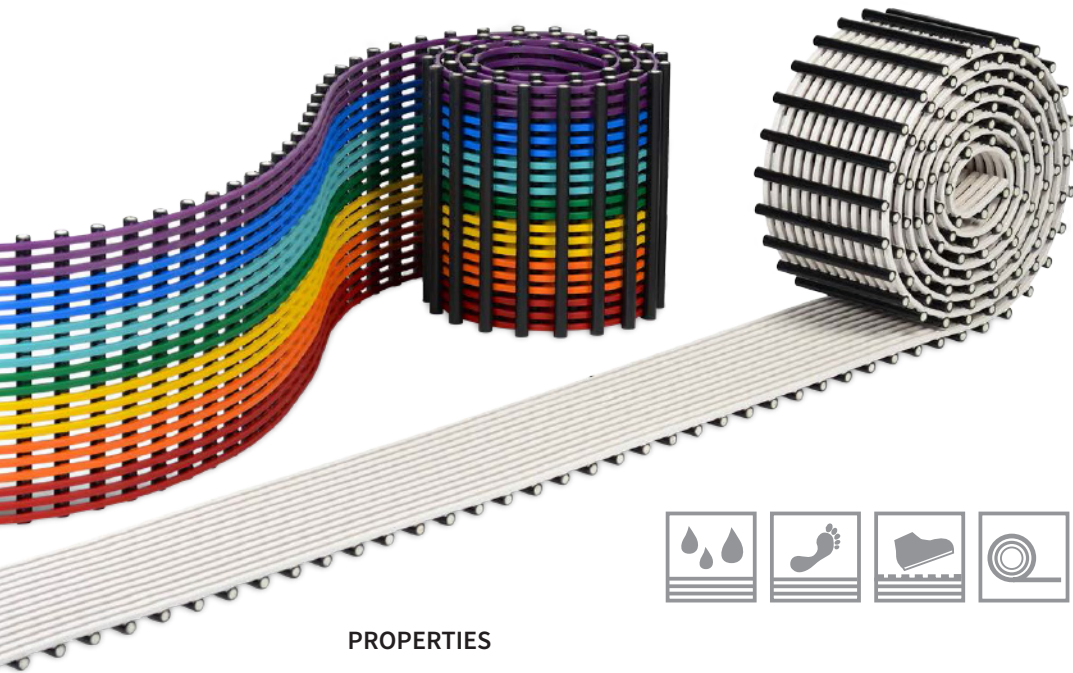
Material	Soft PVC
Available width	40 to 120 cm
Total height	14.0 mm
Width of top profile	8.6 mm
Gap width	7.0 mm
Weight	appr. 6.8 kg/m ²
Temperature resistance	-5°C to + 60°C
Slip resistance	Classification C to DIN 51097

ARTICLE NUMBERS

Color	40 cm	50 cm	60 cm	80 cm	100 cm	120 cm
black	93005	93004	93003	93002	93001	93009
green	93205	93204	93203	93202	93201	93209
mint green	93255	93254	93253	93252	93251	93259
brown	93305	93304	93303	93302	93301	93309
blue	93405	93404	93403	93402	93401	93409
red	93505	93504	93503	93502	93501	93509
ivory	93605	93604	93603	93602	93601	93609
grey	93705	93704	93703	93702	93701	93709
white	93805	93804	93803	93802	93801	93809
yellow	93905	93904	93903	93902	93901	93909

EHA – COVER GRATINGS

HYGIENIC, ROLLABLE, LONG LASTING



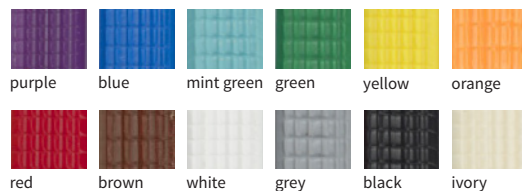
PROPERTIES

EHA – Cover gratings are slip resistant, rollable, hygienic, fungicidal, and easy to handle. They are available in all heights between 20 and 35 mm.

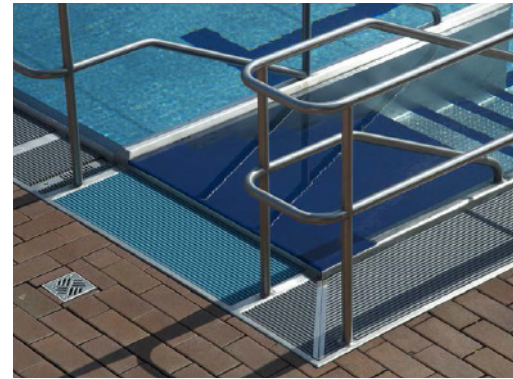
AREAS OF USE

Covering overflow gutters and ducts, can be used in swimming pools, leisure pools, spas and seawater pools, suitable for all pool shapes.

COLORS



EHA – COVER GRATINGS



EHA – Cover gratings are suitable for round and rectangular overflow gutters. The available colors can be combined as desired.

EHA – Cover gratings are rollable and thus easy to handle. EHA – Cover gratings extending parallelly to the pool edge enable water to run off easily. The fungicidal treatment brings about a certified antibacterial effect over a long period of time.

TECHNICAL DATA

Material	Soft PVC / FRP
Widths	Freely spanning up to 580 mm max.
Heights	20, 23, 25, 27, 28, 31, 33, 35 mm
Standard height	23.0 mm
FRP carrier bar	ø 10, 12, 16 mm
Width of tread profile	8.6 mm
Gap width	7.0 mm
Weight (height 23 mm)	ca. 12 kg/m ²
Temperature resistance	-5°C to +60°C
Slip resistance	Classification C to DIN 51097



VARIANTS

Height mm	20	23	25	27	28	31	33	35
ø carrier bar mm	10	10	10	12	16	12	12	12

UV resistant, durable, and easily cleaned with customary processes.

ACCESSORIES



Blunt edge

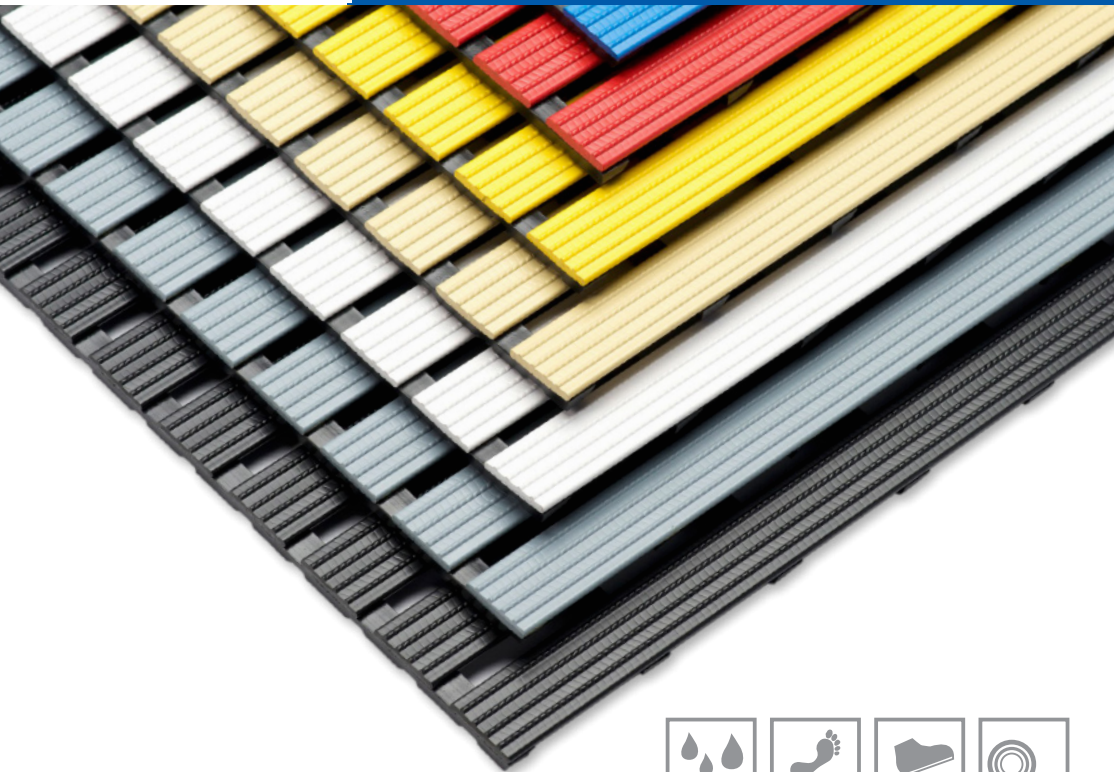
Miter edge

Connector

Clip connector

EHA – MANUPLAST BATH GRATINGS

SAFETY WITH WELLNESS FEELING



PROPERTIES

EHA – ManuPlast bath gratings are safe, rollable, and slip resistant.

AREAS OF USE

Swimming pools and therapeutic baths, changing and locker rooms, saunas, health resort facilities, hospitals etc.

COLORS



blue red yellow beige white grey black

EHA – MANUPLAST BATH GRATINGS



EHA – ManuPlast bath gratings are made of durable, pore-free, impact resistant high-grade unplasticized PVC. The top profiles are arranged across the walking direction.

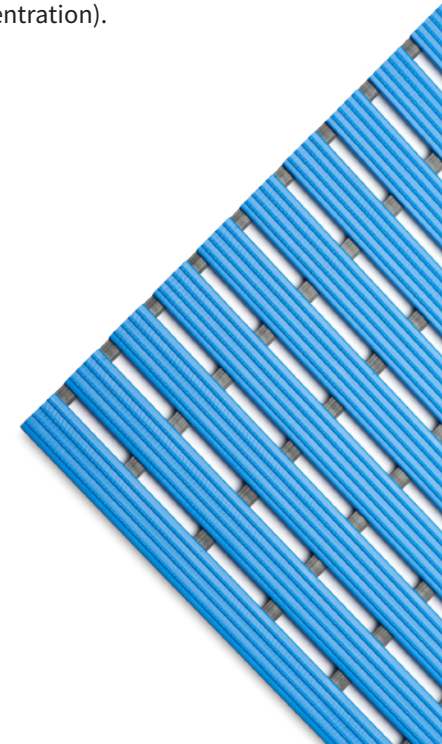
Safety profiles prevent slips and make sure pools, baths or saunas can be safely enjoyed. EHA – ManuPlast bath gratings allow water to drain on all sides and thanks to their high deadweight they rest firmly on the floor (no floating).

TECHNICAL DATA

Material of top profile	Unplasticized PVC
Material of bottom profile	Soft PVC
Available width	60, 80, 100 cm
Total height	12.0 mm
Weight	appr. 6 kg/m ²
Temperature resistance	-5°C to 60°C
Slip resistance	Classification C to DIN 51097

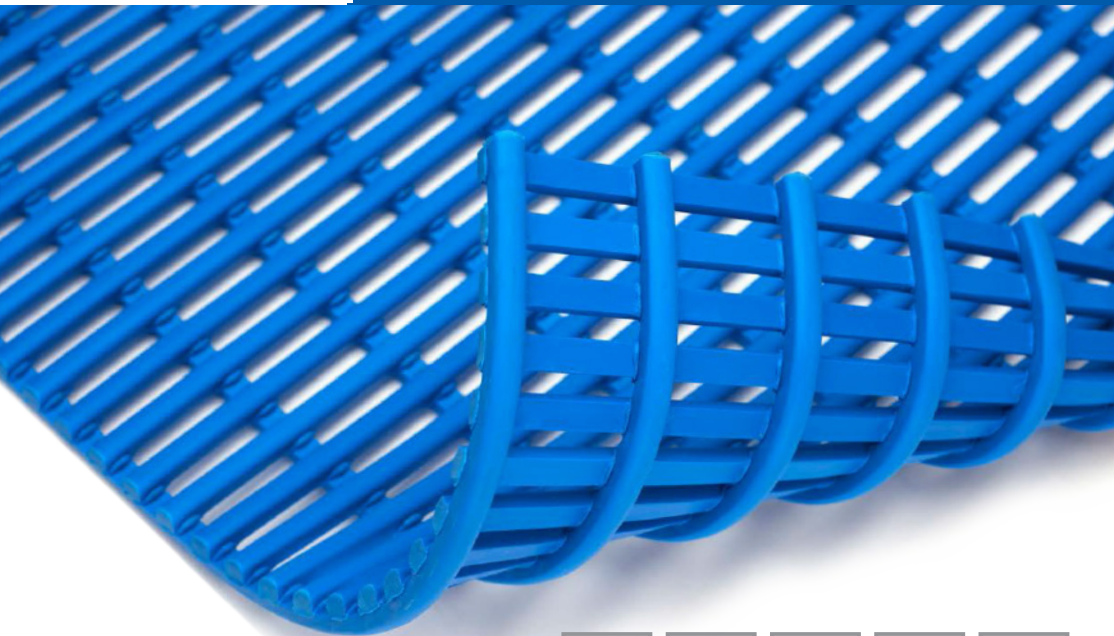
ARTICLE NUMBERS

Color	60 cm	80 cm	100 cm
black	88003	88002	88001
blue	88403	88402	88401
red	88503	88502	88501
beige	88603	88602	88601
grey	88703	88702	88701
white	88803	88802	88801
yellow	88903	88902	88901



EHA – THERMOLAST® K PVC-FREE MATS

ALWAYS SAFE AND HYGIENIC IN BAREFOOT AREAS



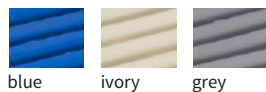
PROPERTIES

PVC-free EHA mats are slip resistant, highly elastic, they are hygienic, rollable, high-temperature resistant, flexible at low temperatures, weatherproof, UV resistant and can be completely recycled.

AREAS OF USE

Swimming pools and therapeutic baths, changing and locker rooms, saunas, health resort facilities, hospitals etc.

COLORS



blue

ivory

grey

EHA – THERMOLAST® K PVC-FREE MATS



The new PVC-free EHA mats made of Thermolast® set new standards in the field of flooring mats for use in wet areas. Thanks to their high temperature resistance as well as pleasant and warm haptic features these PVC-free EHA mats are the first-choice product also for use in saunas. The mats are robust, hygienic, and cleaned using customary cleaning methods; since they are highly elastic they can be easily handled.

The mat meets requirements to DIN 51097 for wet barefoot areas and thus ensure optimum anti-skid characteristics.

TECHNICAL DATA

Material	THERMOLAST® K
Available width	40 to 120 cm
Weight	appr. 5.4 kg/m ²
Temperature resistance	-5°C to +80°C up to 100°C temporarily
Slip resistance	Classification C to DIN 51097

ARTICLE NUMBERS

Color	40 cm	50 cm	60 cm	80 cm	100 cm	120cm
blue	70405	70404	70403	70402	70401	70409
ivory	70605	70604	70603	70602	70601	70609
grey	70705	70704	70703	70702	70701	70709

EHA – STANDARD MATTING

IF BAREFOOTED OR IN WORK SHOES:
ALWAYS SAFE AND HYGIENIC



PROPERTIES

EHA – Standard mats have anti-skid properties, are hygienic and rollable.

AREAS OF USE

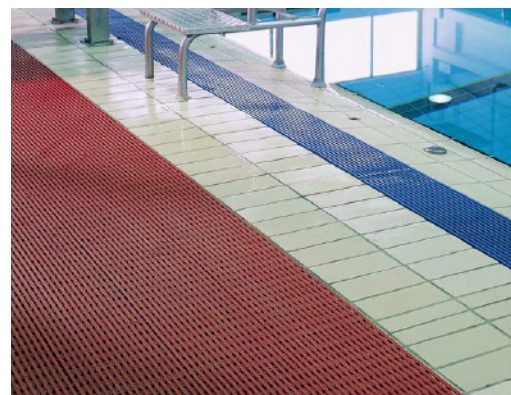
Swimming pools, therapeutic baths, changing rooms, health resort facilities, hospitals, restrooms and workplaces etc.

COLORS



blue green yellow red ivory mint green grey

EHA – STANDARD MATTING



The EHA – Standard mat is slip resistant and hygienic because its non-porous material does not allow germs to develop.

An integrated mat drainage makes sure water can run off on all sides.

EHA – Standard mats are soft, elastic, and slip resistant and they are also perfectly suitable as ergonomic mats for workplaces.

TECHNISCHE DATEN

Material	Soft PVC
Available width	40 to 120 cm
Total height	12.0 mm
Width of top profile	8.6 mm
Gap width	7.0 mm
Weight	appr. 5.5 kg/m ²
Temperature resistance	-5°C to + 60°C
Slip resistance	Classification C to DIN 51097

ARTICLE NUMBERS

Color	40 cm	60 cm	80 cm	100 cm	120 cm
green	96206	96204	96208	96201	96209
mint green	96256	96254	96258	96251	96259
blue	96406	96404	96408	96401	96409
red	96506	96504	96508	96501	96509
ivory	96606	96604	96608	96601	96609
grey	96706	96704	96708	96701	96709
yellow	96906	96904	96908	96901	96909